

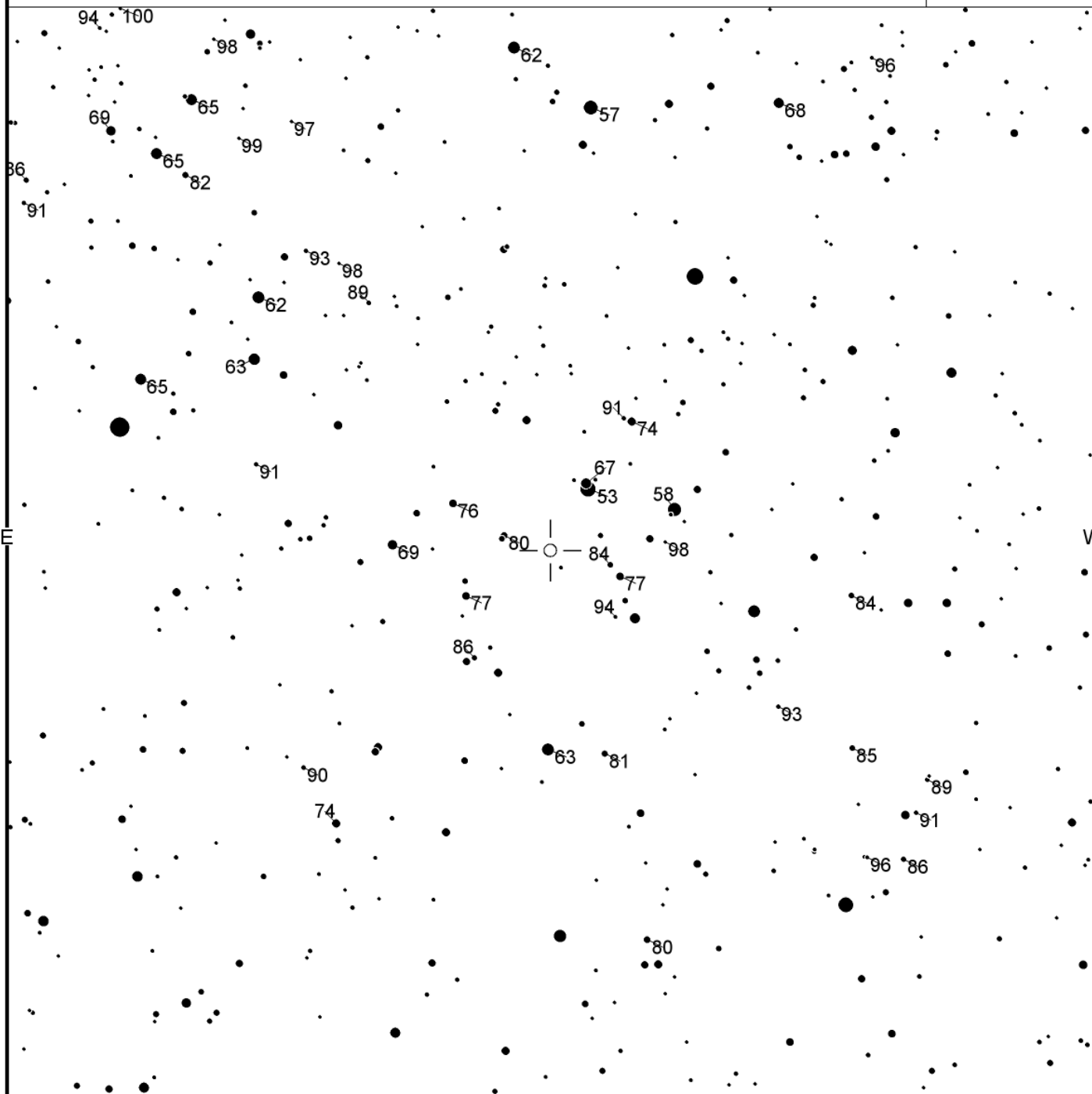
R Tri

Magn: 5.4 - 12.6 V
Period: 266.9
Type: M
Spec: M4IIIe-M8e

R Tri
(2000) 02:37:02.34 +34:15:51.4

AAVSO
Chart

X24082AFQ



FOV = 7.5°

Please use the photometry table for CCD observations.

<https://www.aavso.org/vsp/>

Copyright © 2019 AAVSO

S