

V Gem

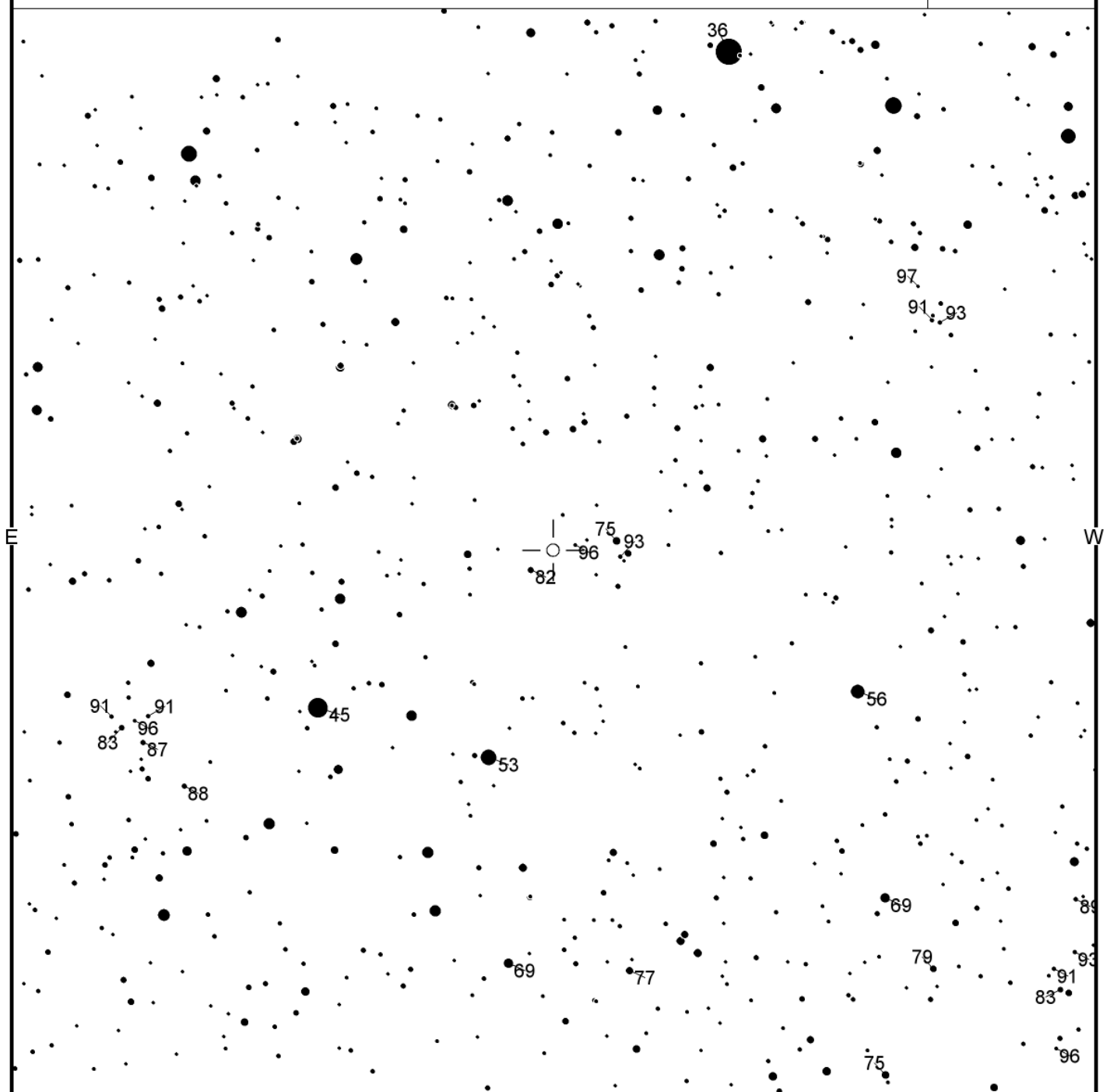
N

AAVSO
Chart

Magn: 7.8 - 14.9 V
Period: 274.8
Type: M
Spec: M4(S)e-M8

V Gem
(2000) 07:23:09.35 +13:06:04.8

X18033BV



FOV = 7.5°

Please use the photometry table for CCD observations.

<https://www.aavso.org/vsp/>

Copyright © 2017 AAVSO

S

Data	Orario TU	GG	stima